

What's in Your Pipeline?

HOBAS CC





Here's What's in Ours:

- One** Centrifugal casting makes HOBAS unique, delivers major benefits.
- Two** Inherent corrosion resistance produces the longest service, a 100-year design life.
- Three** 25 years of experience with installations in most major US municipalities.
- Four** Engineering support and field service staff to assure your success.
- Five** Quality. The finest materials and sophisticated manufacturing for consistent, reliable pipes every job, every time.

The Best Pipe Investment You Can Make

Centrifugal Casting Is the Difference

Exactly What Are HOBAS Pipes?

HOBAS pipes are unique – centrifugally cast, fiberglass reinforced, polymer mortar (CCFRPM). They are strong, light and inherently corrosion resistant with consistent dimensions, smooth surfaces and high stiffness. Sophisticated HOBAS manufacturing means you get real value, the lowest life cycle cost in the industry for both new installations and rehabilitation.

Long-Life

HOBAS pipe is inherently corrosion resistant because of the materials that go into it. Design service life is up to 100 years and more. HOBAS meets or exceeds ASTM standards as measured in sewer pipe accelerated aging tests. Results project that HOBAS pipe will last many thousands of years, unequalled by any other pipe.

Consistent Quality for Performance You Can Count On

Most U.S. municipalities have HOBAS pipe in their systems and the use of HOBAS pipe in the USA is expanding faster than ever after more than 25 years of reliable performance. More than 8,000 miles of HOBAS pipe is in service around the world. The HOBAS computer controlled production process assures consistent, high quality pipes, tested to comply with applicable standards.

Smoother Surfaces, High Flow Capacity

Precision centrifugal casting produces pipes that no other method can deliver – a dense composite with mold smooth exterior surfaces and a glass-smooth liner that is nonporous, resilient and abrasion resistant. Combined with HOBAS thin-wall construction and resulting oversized I.D., you get the highest flow capacity available.

Leak-Free Joints

Another HOBAS advantage is push-together joints for a 100 percent leak-free pipeline that preserves



the streets above and reduces treatment costs. HOBAS pipe has a consistent, mold-smooth O.D. The pipes seal perfectly to molded and precise tolerance machined couplings.

Easy Installation

Installation is quick and easy for several reasons. HOBAS high stiffness design provides predictable, reliable pipe performance by every method. And push-together joints are simple and fast to assemble. Lightweight pipes are safe and easy to handle, often with smaller equipment typically on the site.



The HOBAS name on the pipe says you've chosen the leader in pipe technology: first choice for virtually every application and method of installation.

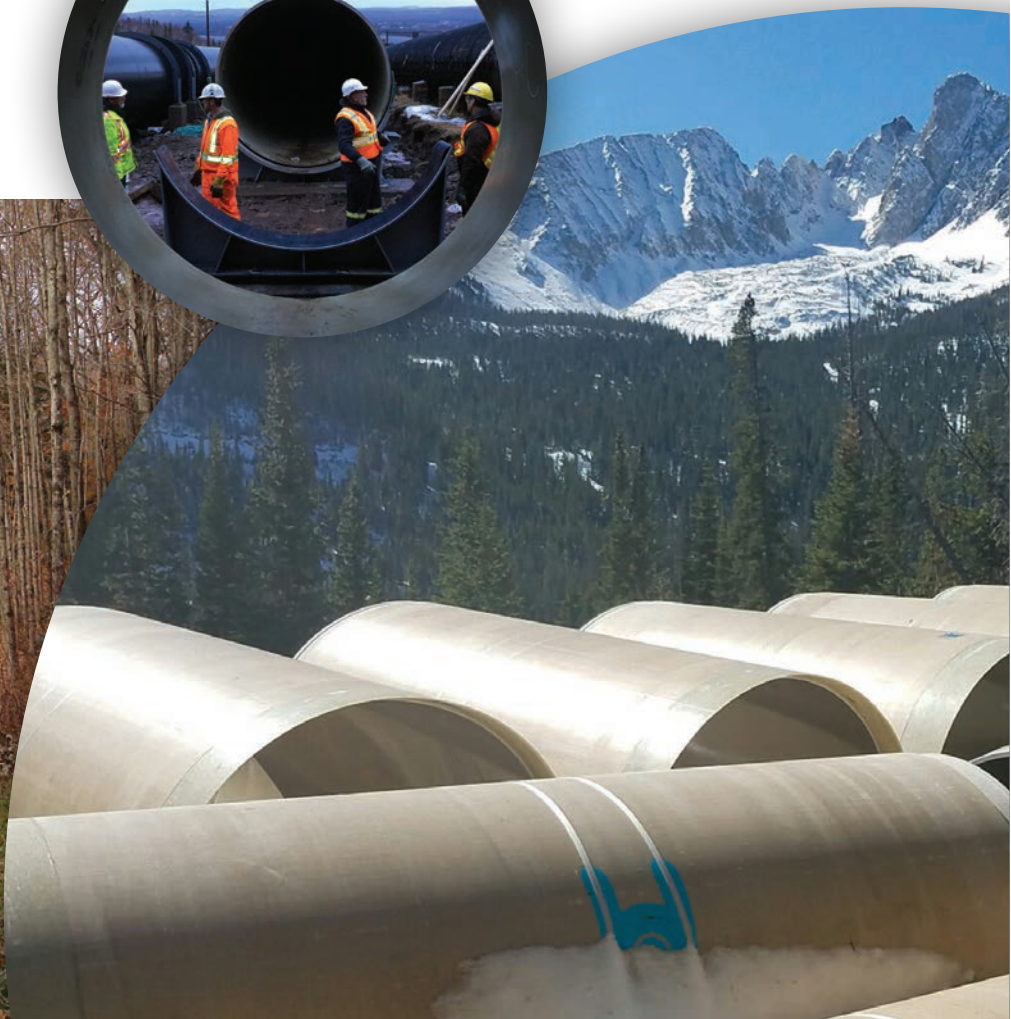


Easy To Specify, Lower Project Cost

ASTM and AWWA standards cover most applications and product tests. And we offer guide specifications to tailor for your individual project and give you the best pipe for your application.

Sliplining: The smooth interior surface and oversized I.D. typically maintain or increase flow capacity. Low profile and flush bell-spigot joint options give you a choice of joint configurations.

Tunneling: Two-pass tunneling requires a smaller primary tunnel because of HOBAS high strength, thin-wall pipe. This reduces excavation and spoil removal. Longer insertion pushes speed installation and require fewer shafts. HOBAS pipe can navigate curves, too.





Microtunneling or Jacking: HOBAS pipe's high strength and smooth, constant O.D. permit drives of 500 to 1,000 feet with lower force and fewer jacking stations.

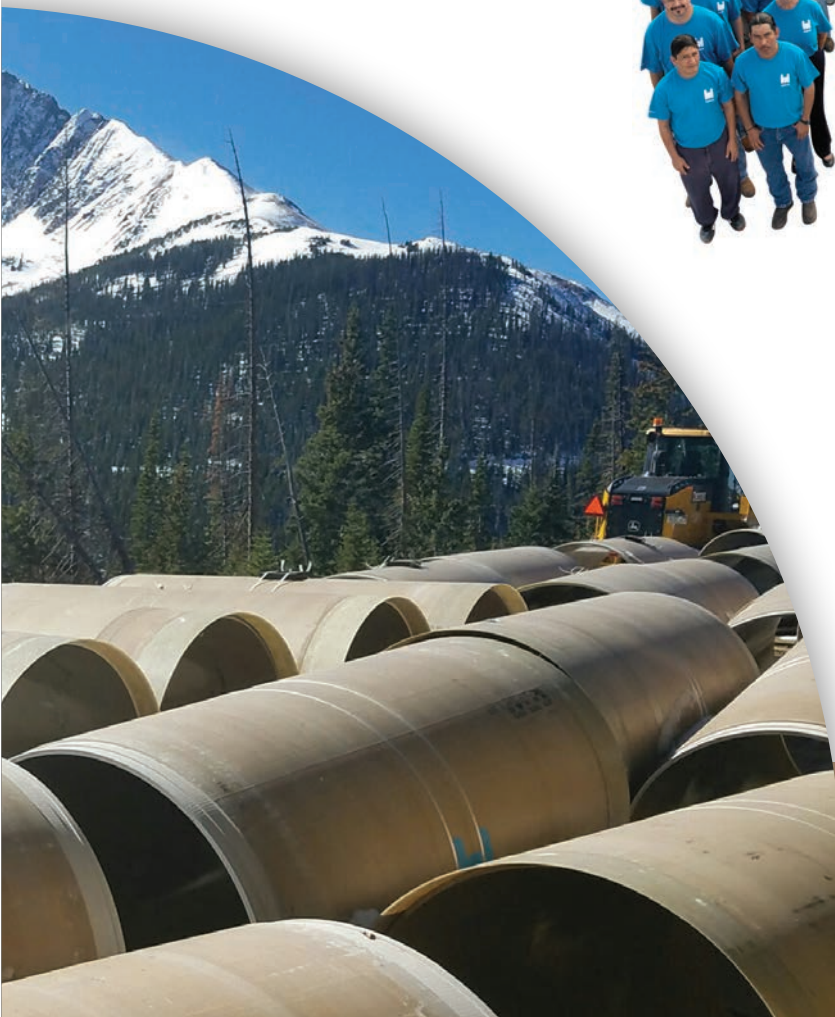
Direct Bury: HOBAS is the preferred pipe for deep installations and withstands covers in excess of 80 feet.

Above Ground: HOBAS pipe is ideal for above ground installations. UV resistance is excellent.



Engineering and Customer Support

Count on HOBAS for responsive customer service and on-site field reps backed by extensive engineering support. That means continuous cooperation from spec writing stage to installation and final acceptance.





Major Advantages in Every Application, Every Type of Installation

Applications and Installation Methods

This unique, high performance pipe. HOBAS pipe is manufactured in diameters from 18 to 126 inches and various section lengths. Other choices include multiple stiffness and pressure classes and a variety of joints and couplings. This flexibility makes HOBAS suitable for virtually every application and type of installation.

The Product

Multiple Applications

- Sewer Interceptors
- Potable Water
- Force Mains
- Outfalls
- Industrial Effluents
- Salt Water Lines
- Odor Control Piping
- Cooling Water
- Penstocks

Diameters from 18 to 126 inches

18"	20"	24"	27"	28"	30"
33"	36"	41"	42"	44"	45"
48"	51"	54"	57"	60"	63"
66"	69"	72"	78"	84"	85"
90"	96"	104"	110"	120"	126"

Wall Construction

I-Beam Principle



Our unique, long-lasting, high-performance, leak-free pipe provides major advantages in both new installations and rehabilitations



Section Lengths

Standard 5, 10 and 20 feet

Pressure Classes

Standard 25, 50, 100, 150, 200 and 250 psi

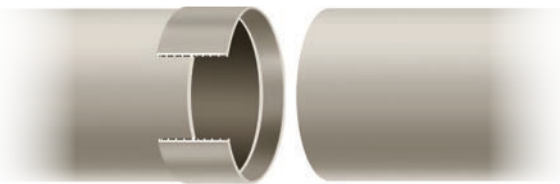
Stiffness Classes

Standard 18, 36, 46 and 72 psi plus jacking pipes

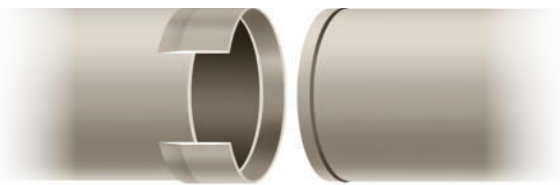
Joints

Joint Type	Applications
FWC Coupling	Direct Bury, Aboveground, (up to 250 psi)
Low Profile Bell-Spigot	Gravity Flow Sliplining
Pressure Relining	Pressure Sliplining
Flush Bell-Spigot	Gravity Flow Direct Jacking and Sliplining
Flush FWC Coupling	Pressure Jacking

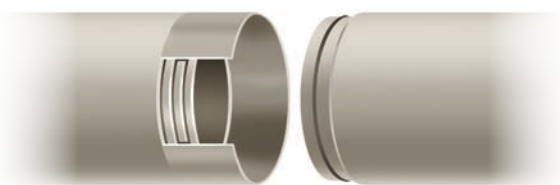
FWC Coupling



Low Profile Bell-Spigot



Flush Bell-Spigot



Fittings

- Elbows
- Tees
- Reducers
- Laterals
- Flanges
- Nozzles
- Wyes
- Manholes

Universal Features

Universal Benefits

Inherent Corrosion Resistance

- Long service life
- No add-on linings or coatings
- Hydraulics don't change
- Lowest Life Cycle cost

Oversized Smooth I.D.

- Superior hydraulic characteristics
- High flow capacity
- Significant energy savings in pumped systems

Lightweight

- Less expensive equipment for handling

Long Length Sections

- Fewer joints to assemble

Resilient Inner Liner

- Excellent abrasion and crack resistance

Computer Controlled Production

- Consistent high quality
- Reduced risk with fewer problems

High Stiffness, Solid Pipe Wall with High Compressive Load Capacity

- Easy to bury using routine methods
- Predictable performance
- Easily handles deep covers
- Long drives routine in sliplining and jacking

Gasket-Sealed, Push-Together Joints

- Fast, fool-proof assembly
- No bonding agents, bolts or welding needed

Leak-free Joints

- Zero infiltration, lower treatment costs
- No ground water pollution

Smooth, Dimensionally Consistent O.D.

- Field length adjustments easy – pipe may be cut anywhere along length and assembled with gasketed joint
- Lowest jacking loads

Easy to Cut, Mold, Miter, Cast or Laminate

- Accommodates any fitting angle
- May be field fabricated, modified or repaired

Standard Specifications

- ASTM D3262 Non-pressure Sanitary Sewers
- ASTM D3754 Sewer Force Mains and Industrial Effluents
- AWWA C950 Pressure Water Systems
- AWWA M45 Fiberglass Pipe Design Manual



HOBAS®

HOBAS Pipe USA
1413 E. Richey Road
Houston, Texas 77073
Tel: (281) 821-2200
www.hobaspipe.com